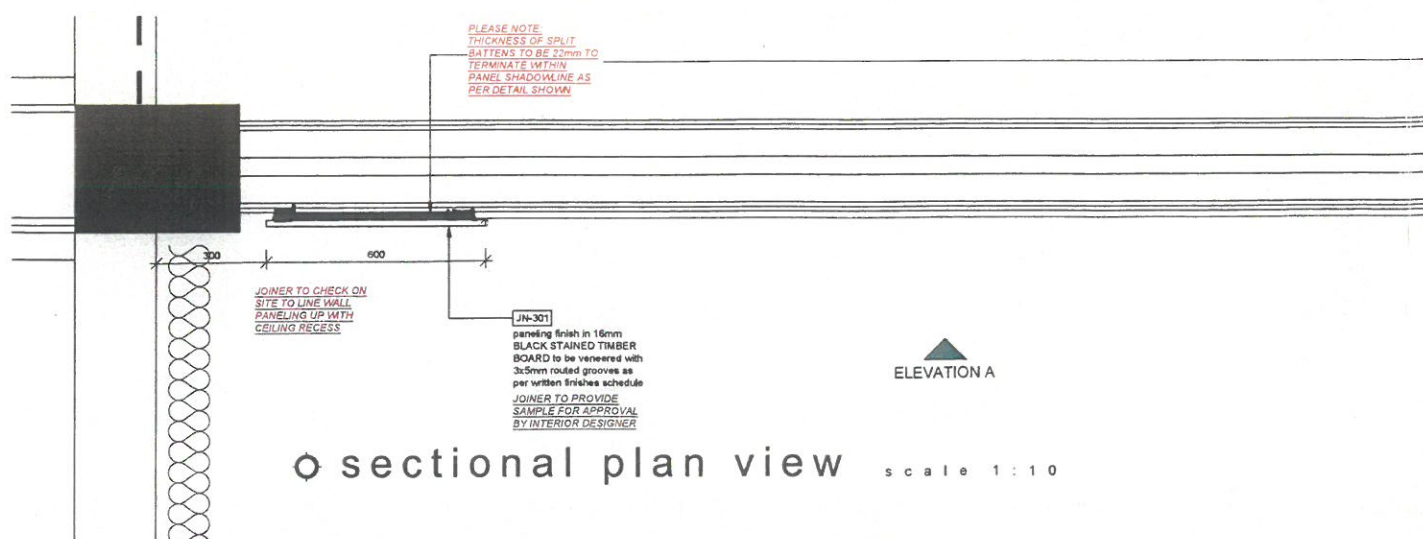


o elevation A scale 1:10



o sectional plan view scale 1:10

- GENERAL NOTE:**
1. MANUFACTURER TO SUBMIT SHOP DRAWING FOR APPROVAL
 2. ALL MATERIALS TO BE USED ACCORDINGLY TO MANUFACTURER'S SPECIFICATION.
 3. NOTE ALL FINISHES ARE TO BE AS PER APPROVED SAMPLE.
 4. ALL JOINERY TO RECEIVE FINAL FINISH PRIOR TO INSTALLATION OF HINGES, RUNNERS & OTHER IRONMONGERY.
 5. TRANSPARENT SILICONE PADS (TO APPROVED SAMPLE) TO ALL DOORS & DRAWERS - TO BE CONFIRMED.
 6. OPERATOR TO CONFIRM FINAL SIZE OF EQUIPMENTS SPEC.
 7. JOINER TO COORDINATE ALL EQUIPMENT PRIOR TO MANUFACTURING.
 8. THIS DRAWING INDICATES THE DESIGN INTENT ONLY.
 9. **MANUFACTURER TO ENSURE STRUCTURAL INTEGRITY OF ALL ELEMENTS**
 10. **ALL DIMENSIONS TO BE CHECKED ON SITE PRIOR TO MANUFACTURE.**
 11. ANY MAJOR DISCREPANCIES NEEDS TO BE CONFIRMED WITH THE INTERIOR DESIGNER.

ALL DRAWINGS TO BE READ IN-CONJUNCTION DRAWING PACKAGE CONSISTS OF:

ALL PUBLIC AREA PACKAGES:

- THIS DRAWING TO BE READ IN CONJUNCTION WITH GA PLANS - SERIES 1000 DRAWING AND JOINERY DRAWINGS FOR HANDING OR MIRROR OF JOINERY

SCHEDULES:

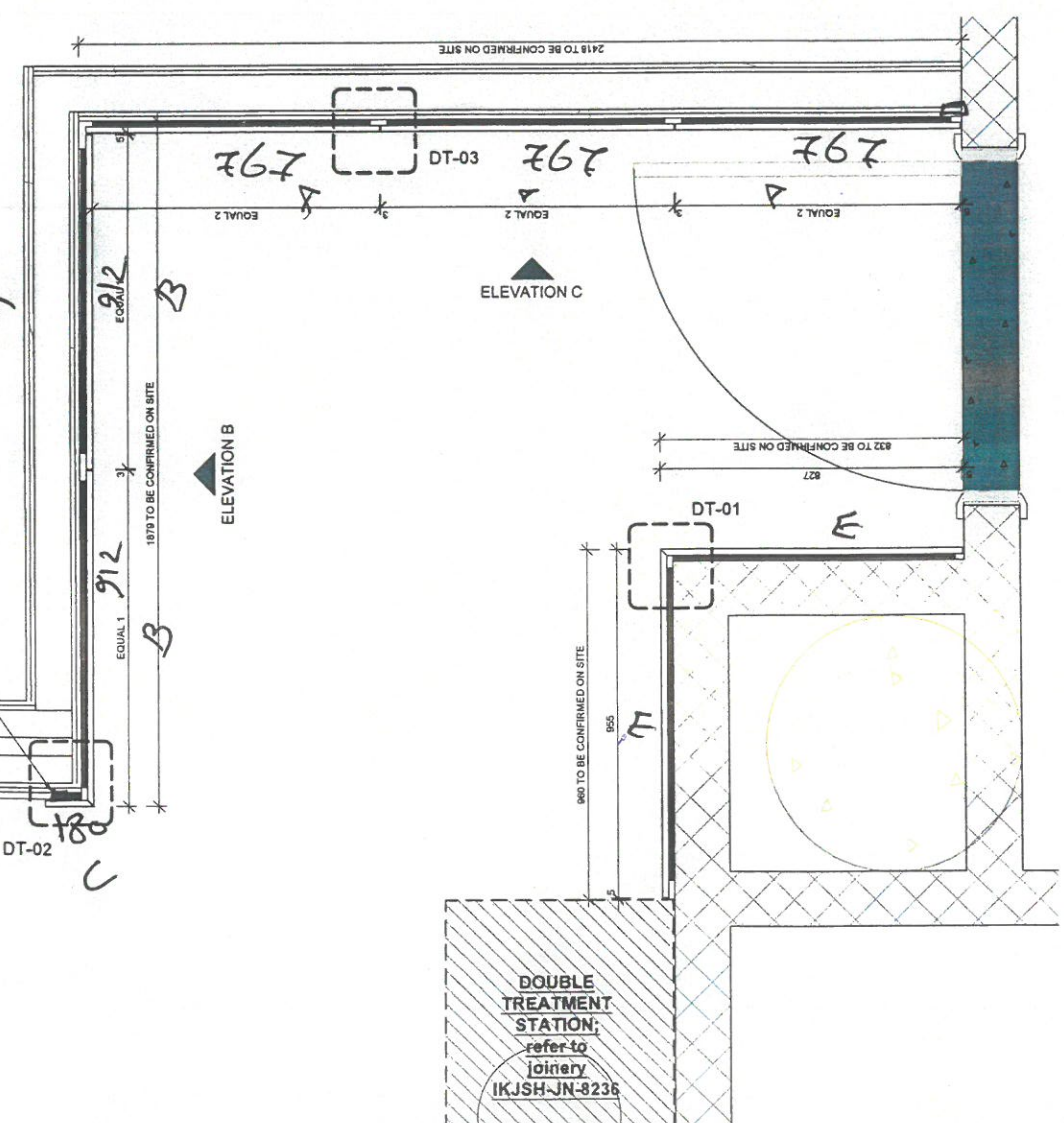
- PUBLIC FINISHES SCHEDULE IKJSH-SCH-16200
- FF&E SPEC SHEET SCH. (GROUND) IKJSH-SCH-16907-09
- FF&E SPEC SHEET SCH. (MEZZANINE) IKJSH-SCH-16910-11

PREAMBLES:

- PREAMBLES - COMBINED SIBA-PR-001

Note: All the drawings indicate design intent only

as approved by Architects



Copyright and right of reproduction of this drawing under portion thereof is reserved by Source IBA.

Contractors and subcontractors to verify all levels, heights and dimensions on site, and to check same against the drawings, before putting any work in hand.

Quality of all materials and workmanship to comply with the relevant SABS and SANS specifications.

The contractor is responsible for correct setting out on the specified works.

Contractors are to ensure that all details shown on this drawing are in complete compliance with local authority by-laws and regulations.

Contractors are to locate and identify existing services on site, and are to protect these from damage throughout the duration of work.

Contractors shall be responsible for ensuring the structural stability of all components of their work and ascertain that the main structure is capable of supporting all loads applied thereto.

Contractors are to ensure that their work on site during construction is adequately protected at all times, and the responsibility for any damages incurred lies with the contractor until final hand over.

Contractors and subcontractors are to ensure that all components, plaster panels and skirting are fixed through all doorways, stairwells and lifts.

Please do not scale off this drawing. Figure dimensions are to be used at all times.

Any queries or variations arising from any of the above, must be reported to Source IBA for clarification, prior to the commencement of any work.

This drawing is to be read in conjunction with Source IBA preclude documentation (SIBA-PR-001). (Please request document if not provided)

REVISIONS

REV	DATE	NAME	DESCRIPTION
0	2022-06-10	JN	ISSUED FOR CONSTRUCTION
A	2021-07-08	JN	ISSUED FOR TENDER

HYATT REGENCY

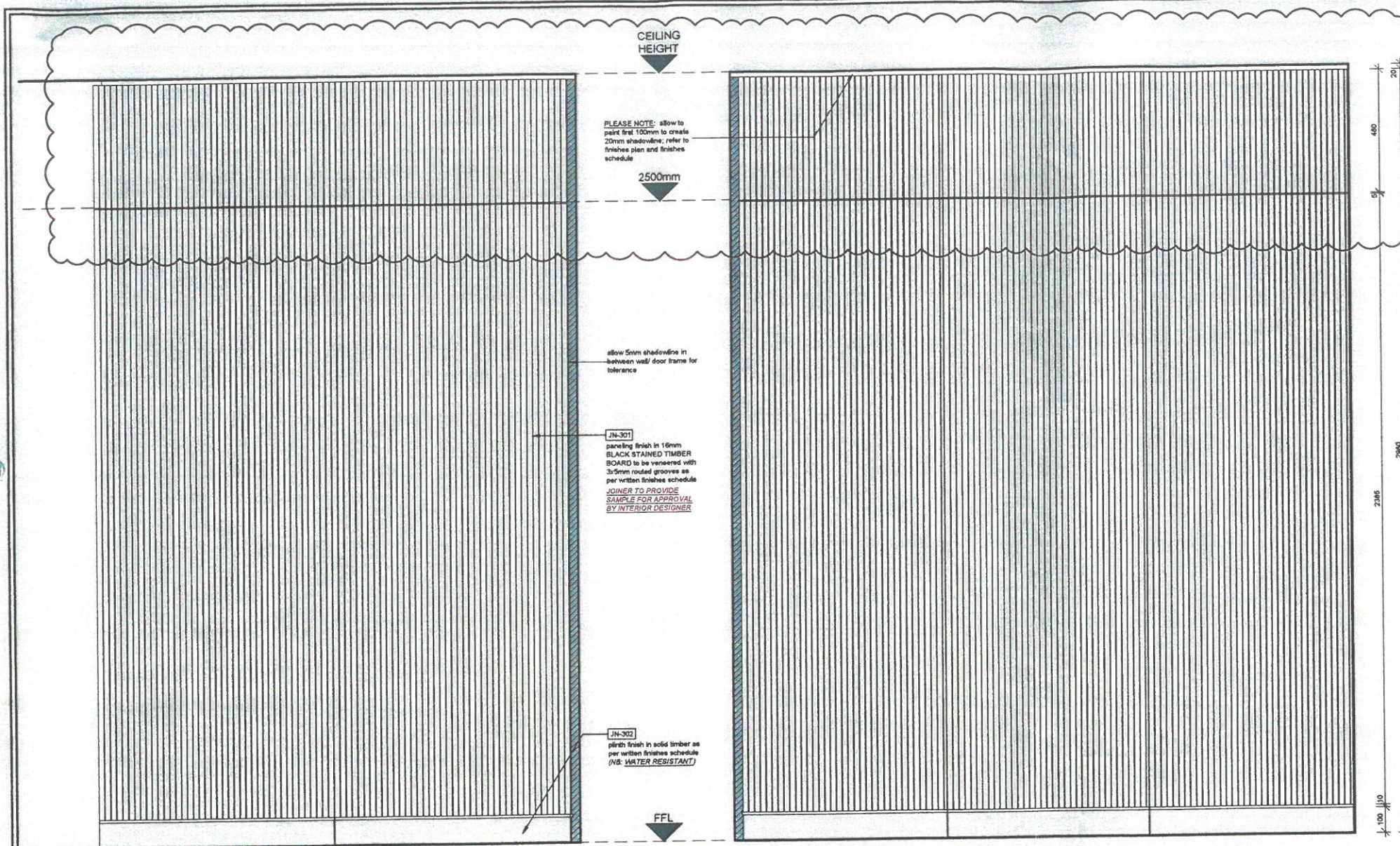
SOURCE.
INTERIOR BRAND ARCHITECTURE
CPY - 07 21 41 31 305
JHB - 07 11 24 5154
www.sourceiba.co.za

HYATT REGENCY
IKEJA

Drawing description
Mezzanine Floor
Spa Single Treatment
Wall Paneling SHEET 1

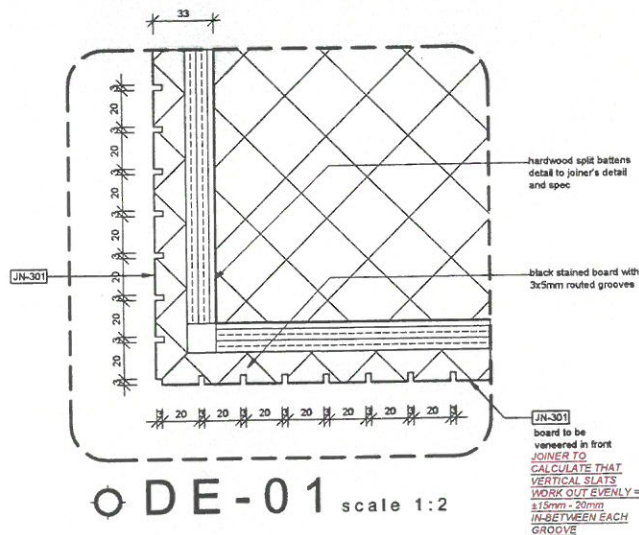
project number	S-98-18	drawn by	JN
drawing number	IKJSH-JN-8244.A	scale	A1 @ As shown
revision	0	date	2021-07-07
drawing approval			

CONSTRUCTION

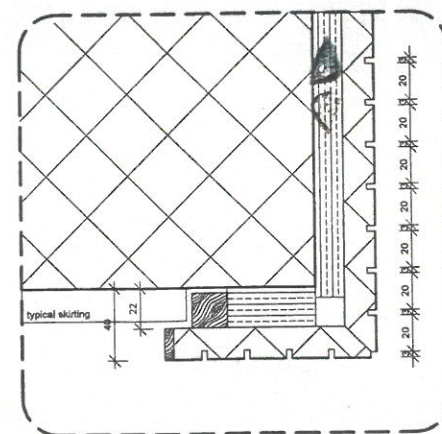


o elevation B scale 1:10

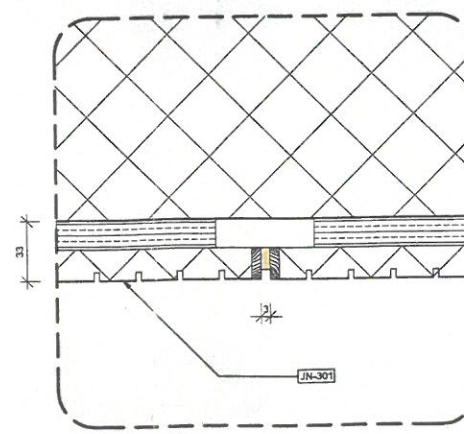
o elevation C scale 1:10



o DE-01 scale 1:2



o DE-02 scale 1:2



o DE-03 scale 1:2

Note: All the drawings indicate design intent only

as approved by Architects

GENERAL NOTE:

1. MANUFACTURER TO SUBMIT SHOP DRAWING FOR APPROVAL.
2. ALL MATERIALS TO BE USED ACCORDINGLY TO MANUFACTURER'S SPECIFICATION.
3. NOTE ALL FINISHES ARE TO BE AS PER APPROVED SAMPLE.
4. ALL JOINERY TO RECEIVE FINAL FINISH PRIOR TO INSTALLATION OF HINGES, RUNNERS & OTHER IRONMONGERY.
5. TRANSPARENT SILICONE PADS (TO APPROVED SAMPLE) TO ALL DOORS & DRAWERS - TO BE CONFIRMED.
6. OPERATOR TO CONFIRM FINAL SIZE OF EQUIPMENTS SPEC.
7. JOINER TO COORDINATE ALL EQUIPMENT PRIOR TO MANUFACTURING.
8. THIS DRAWING INDICATES THE DESIGN INTENT ONLY.
MANUFACTURER TO ENSURE STRUCTURAL INTEGRITY OF ALL ELEMENTS
9. **ALL DIMENSIONS TO BE CHECKED ON SITE PRIOR TO MANUFACTURE.**
10. ANY MAJOR DISCREPANCIES NEEDS TO BE CONFIRMED WITH THE INTERIOR DESIGNER.

ALL DRAWINGS TO BE READ IN-CONJUNCTION DRAWING PACKAGE CONSISTS OF:

ALL PUBLIC AREA PACKAGES:

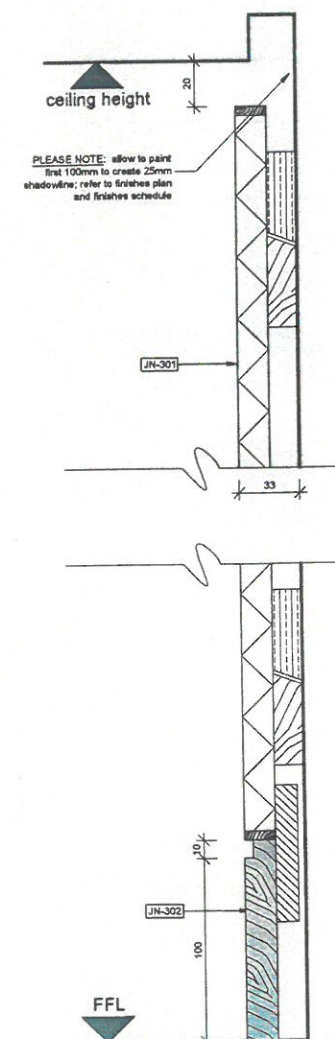
- THIS DRAWING TO BE READ IN CONJUNCTION WITH GA PLANS - SERIES 1000 DRAWING AND JOINERY DRAWINGS FOR HANDING OR MIRROR OF JOINERY

SCHEDULES:

- PUBLIC FINISHES SCHEDULE **IKJSH-SCH-16200**
- FF&E SPEC SHEET SCH. (GROUND) **IKJSH-SCH-16907-09**
- FF&E SPEC SHEET SCH. (MEZZANINE) **IKJSH-SCH-16910-11**

PREAMBLES:

- PREAMBLES - COMBINED **SIBA-PR-001**



o typical section scale 1:2

Copyright and right of reproduction of this drawing under patent law is reserved by Source USA.

- Contractors and subcontractors to verify all levels, heights and dimensions on site, and to check same against the drawings, before putting any work in hand.
- Quality of all materials and workmanship to comply with the relevant SABS and SSS specifications.
- The contractor is responsible for correct setting out on the specified work.
- Contractors are to ensure that all details shown on this drawing are in complete compliance with local authority by-laws and regulations.
- Contractors are to locate and identify existing services on site, and are to protect them from damage throughout the duration of work.
- Contractors shall be responsible for ensuring the structural stability of all components of their work and ensure that the main structure is capable of supporting all loads applied thereto.
- Contractors are to ensure that their work on site during construction is adequately protected at all times, and the responsibility for any damages incurred lies with the contractor and their firm only.
- Contractors and subcontractors are to ensure that all components, placing panels and shapings are fit through all doors, windows and lifts.
- Please do not scale off this drawing. Figured dimensions are to be used at all times.
- Any queries or variations arising from any of the above, must be reported to Source USA for clarification, prior to the commencement of any work.
- This drawing is to be read in conjunction with Source USA preambles documentation SIBA-PR-001. (Please request document if not provided).

REVISIONS

0	2022	JN	ISSUED FOR CONSTRUCTION
A	2021	JN	ISSUED FOR TENDER
rev	date	name	description

HYATT REGENCY

SOURCE.
INTERIOR BRAND ARCHITECTURE

CPT +27 21 421 9550
JNB +27 11 248 5754
www.SOURCE.CO.ZA

**HYATT REGENCY
IKEJA**

drawing description
**Mezzanine Floor
Spa Double Treatment
Wall Paneling SHEET 2**

project number **S-08-18** drawn by **JN**

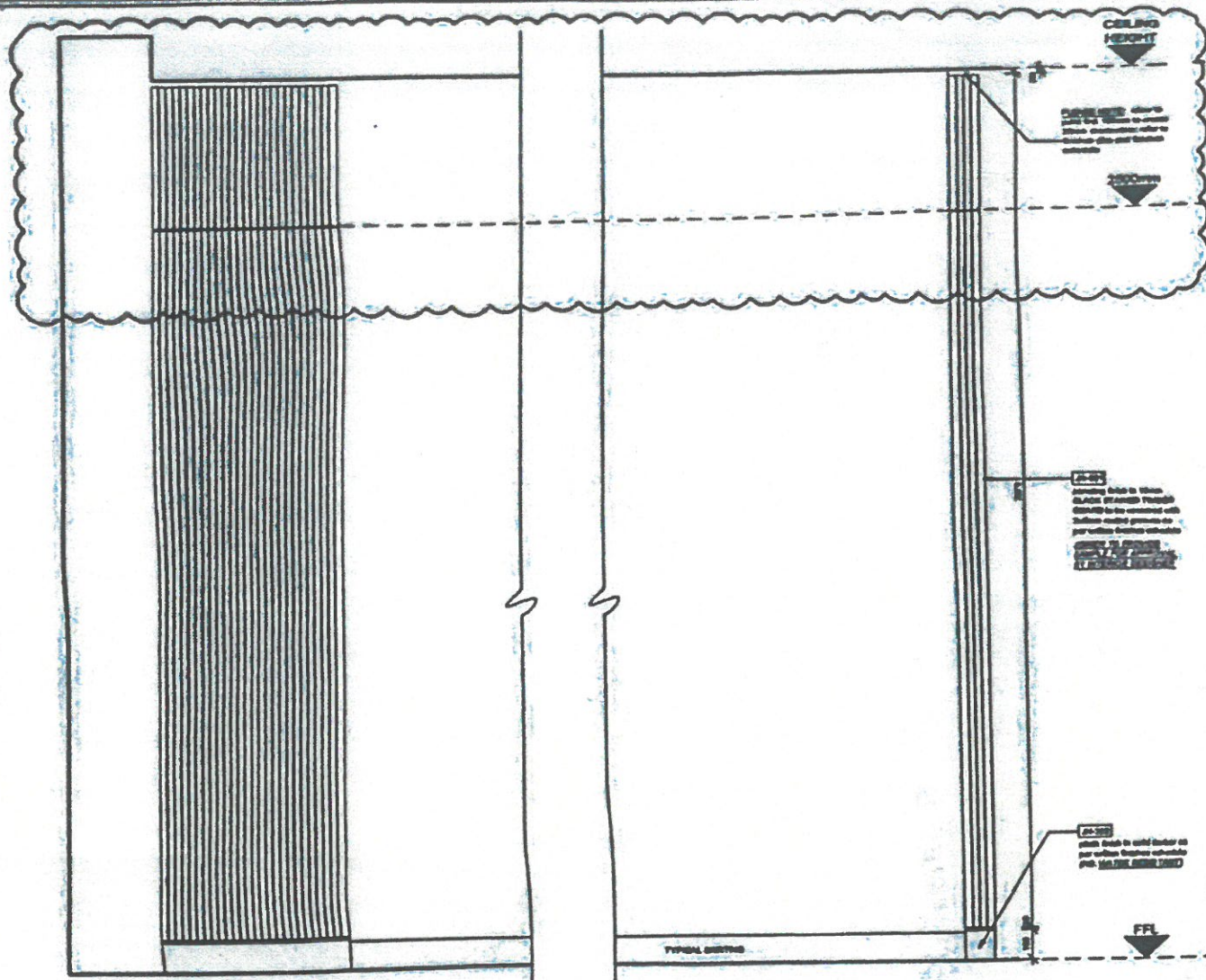
drawing number **IKJSH-JN-8244-B** scale **A1 @ As shown**

revision **0** date **2021-07-07**

drawing approval

CONSTRUCTION





o elevation A 1:10

GENERAL NOTE:

1. MANUFACTURER TO SUBMIT SHOP DRAWINGS FOR APPROVAL.
2. ALL MATERIALS TO BE USED ACCORDINGLY TO MANUFACTURER'S SPECIFICATION.
3. NOTE ALL FINISHES ARE TO BE AS PER APPROVED SAMPLE.
4. ALL JOINERY TO RECEIVE FINAL FINISH PRIOR TO INSTALLATION OF HINGES, RUNNERS & OTHER JOINERY.
5. TRANSPARENT SILICONE PADS (TO APPROVED SAMPLE) TO ALL DOORS & DRAWERS - TO BE CONFIRMED.
6. OPERATOR TO CONFIRM FINAL SIZE OF EQUIPMENT'S SPEC.
7. JOINER TO COORDINATE ALL EQUIPMENT PRIOR TO MANUFACTURING.
8. THIS DRAWING INDICATES THE DESIGN INTENT ONLY.
9. MANUFACTURER TO ENSURE STRUCTURAL INTEGRITY OF ALL ELEMENTS.
10. ALL DIMENSIONS TO BE CHECKED ON SITE PRIOR TO MANUFACTURE. ANY MAJOR DISCREPANCIES NEEDS TO BE CONFIRMED WITH THE INTERIOR DESIGNER.

ALL DRAWINGS TO BE READ IN CONJUNCTION DRAWING PACKAGE CONSISTS OF:

ALL PUBLIC AREA PACKAGES:

- THIS DRAWING TO BE READ IN CONJUNCTION WITH GA PLANS - SERIES 1000 DRAWING AND JOINERY DRAWINGS FOR HANDING OR MIRROR OF JOINERY

SCHEDULES:

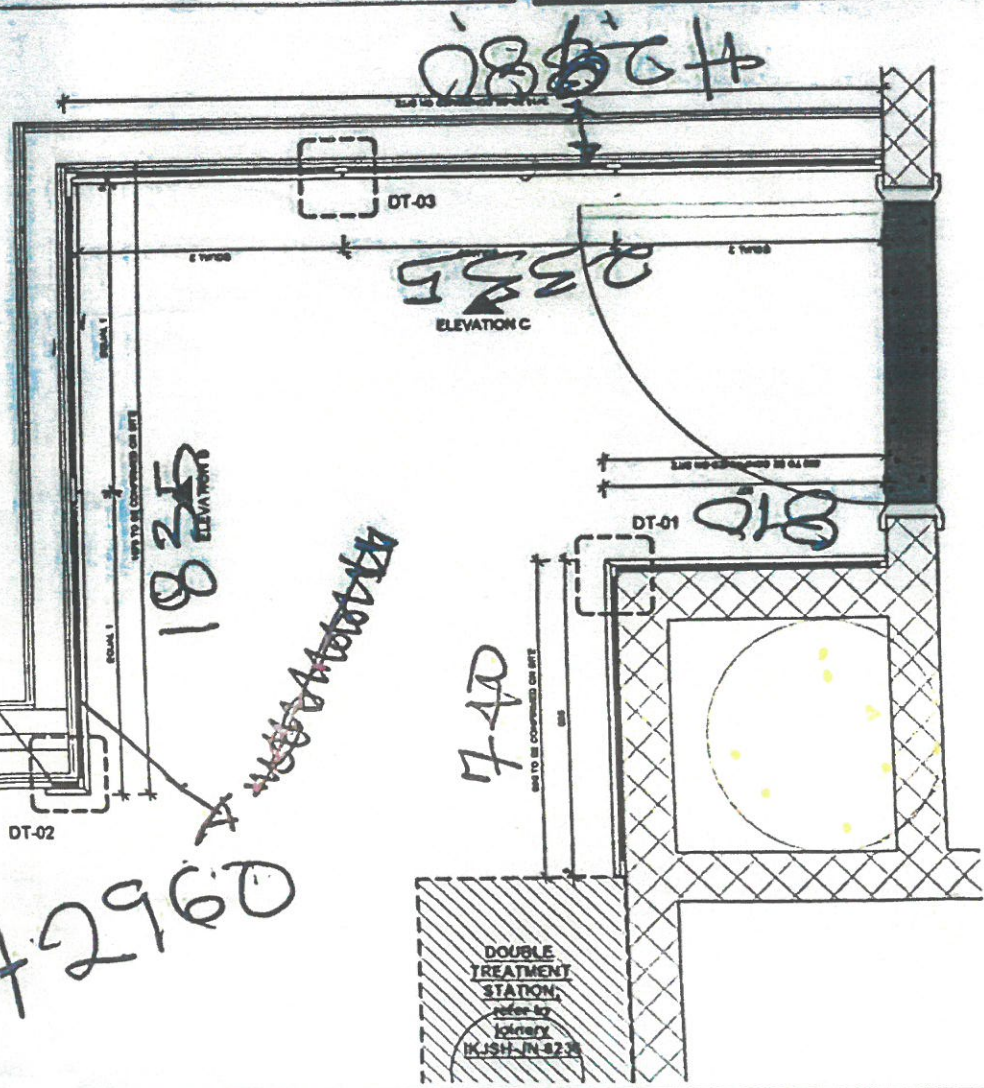
- PUBLIC FINISHES SCHEDULE IKUSH-SCH-10200
- FF&E SPEC SHEET SCH (GROUND) IKUSH-SCH-10007-00
- FF&E SPEC SHEET SCH (MEZZANINE) IKUSH-SCH-10010-11

PREAMBLES:

- PREAMBLES - COMBINED SBA-PR-001

Note: All the drawings indicate design intent only

as approved by Architects



o sectional plan view 1:10

HYATT REGENCY	
SOURCE. INTERIOR DESIGN ARCHITECTURE	
HYATT REGENCY IKEJA	
Mezzanine Floor Spa Single Treatment Wall Paneling SHEET 1	
Project number S-08-10	Drawn by JA
Working number IKUSH-JN-2244 A	Scale A1 @ As shown
Sheet 0	Date 2021-07-08
CONSTRUCTION	

8244 SPA